

A.H. Stephens State Park Trail Map

456 Alexander Street NW, Crawfordville, Georgia 30631 • Park: 706-456-2602 • Emergency: 911 • Reservations: 1-800-864-7275

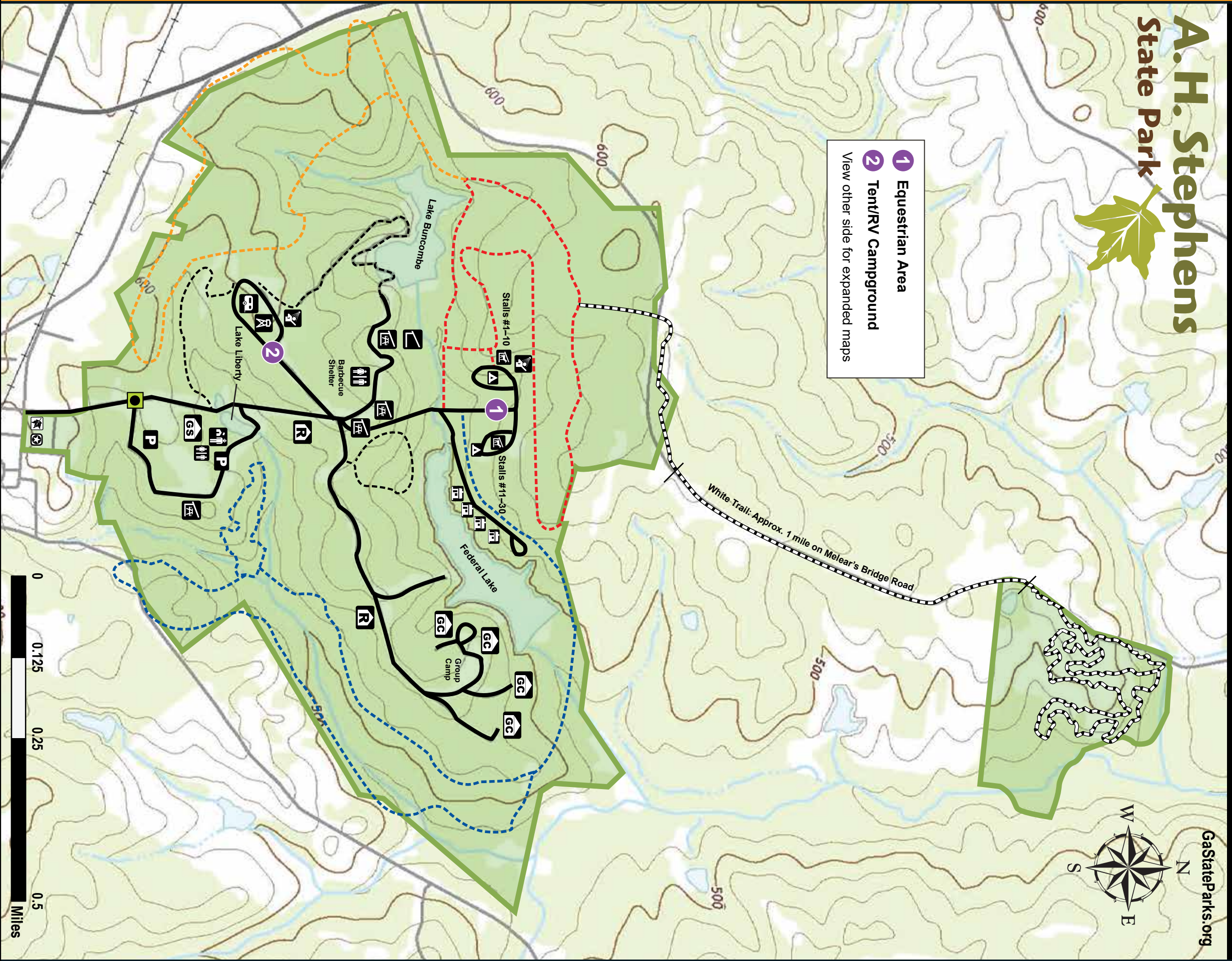
A. H. Stephens State Park



GaStateParks.org

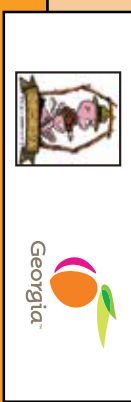


- 1** Equestrian Area
 - 2** Tent/RV Campground
- View other side for expanded maps






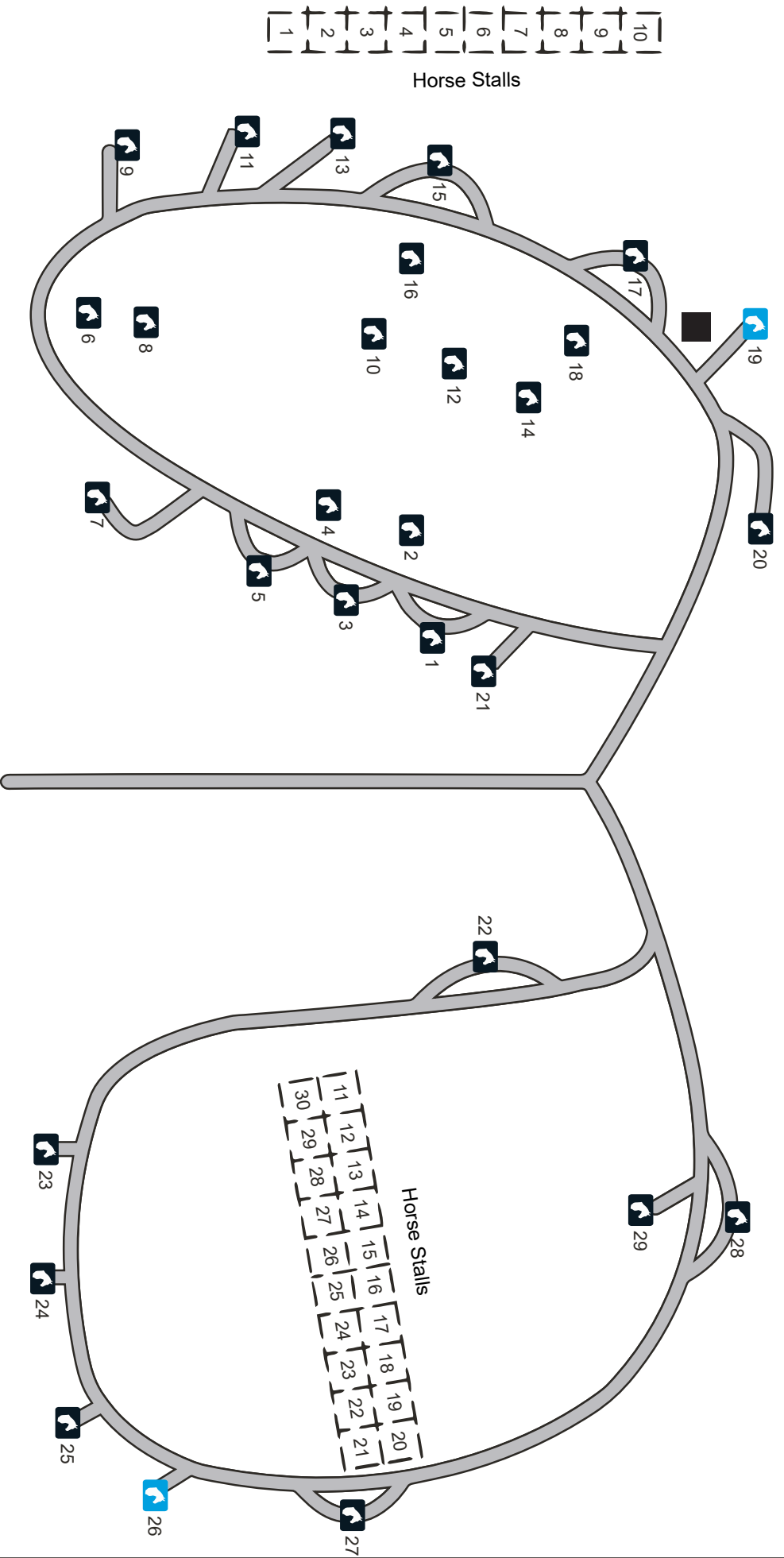
LEGEND

Red Horse Trail (3.5 miles)	Park Office	Staff Residence	Pioneer Camp
Blue Horse Trail (8 miles)	ParkPass Booth	Picnic Shelter	Group Camp
White Horse Trail (6 miles)	Group Shelter	Tent/RV Camping	Horse Stalls
Orange Horse Trail (3.5 miles)	Restroom	Equestrian Camping	Fire Tower
Nature Trails	Parking	Cottage	
	Civil War Museum	Comfort Station	
	A.H. Stephens House	Fishing Dock	

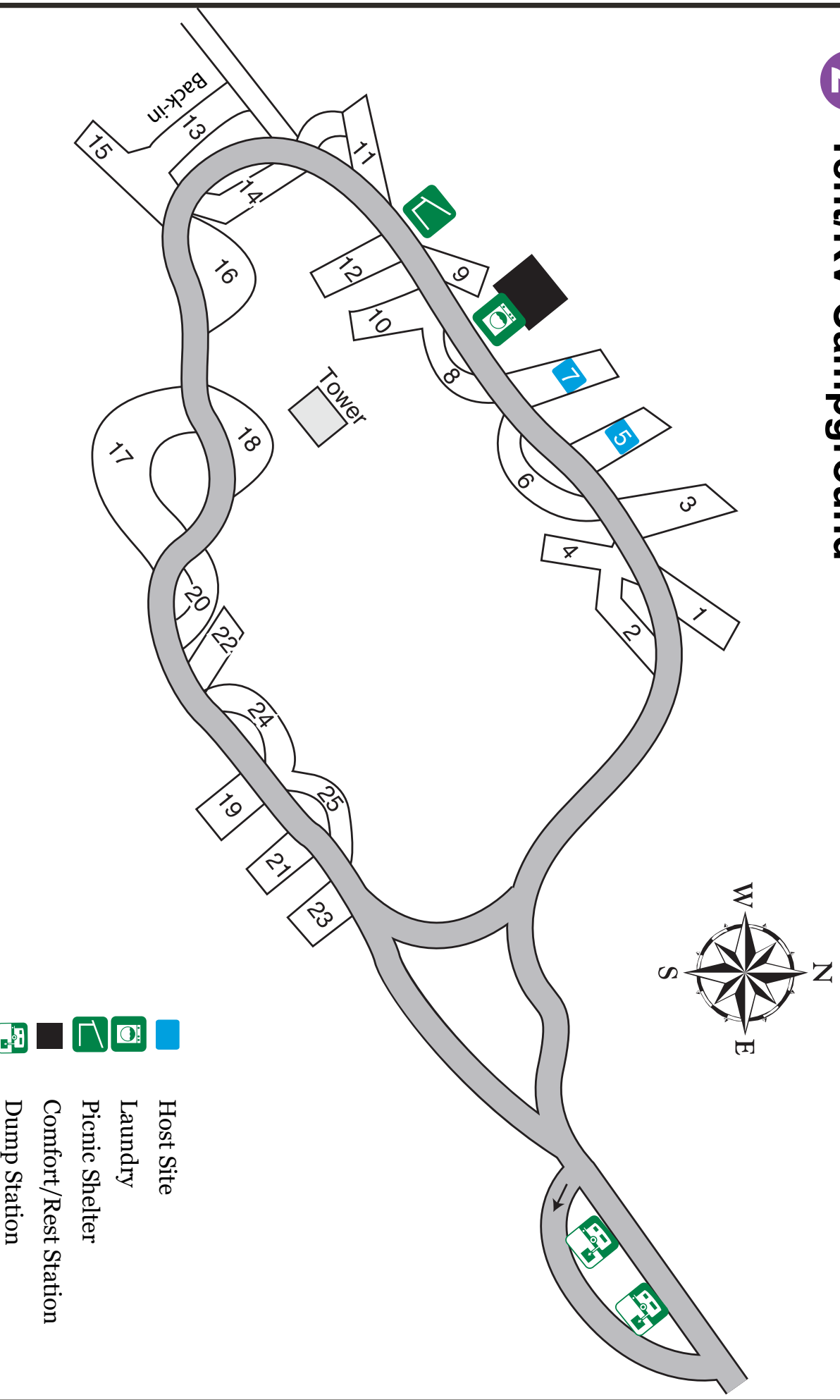


1 Equestrian Area

-  Equestrian Campsite
-  Equestrian Campsite (Host)
-  Comfort Station



2 Tent/RV Campground



All Tent/RV campground sites are full hookup. Sites 11 & 9 are ADA accessible.