

April 28, 2026

MEMORANDUM

TO: Members, Board of Natural Resources

FROM: Walter Rabon, Commissioner



SUBJECT: Request for approval of reversionary deed language of approximately 13,843.5± acres conveyed by donation by the Georgia Department of Transportation (DOT), in Bleckley, Lee, Long, Jeff Davis, Madison, Montgomery, Murray, Putnam, Screven, Taylor, and Upson County.

Comments

The Department request approval of adding reversionary deed language of approximately 13,843.5+ acres conveyed by donation by the Georgia Department of Transportation (DOT), in Bleckley, Lee, Long, Jeff Davis, Madison, Montgomery, Murray, Putnam, Screven, Taylor, and Upson County.

<u>Owner</u>	<u>Acres</u>
Georgia Department of Transportation	13,843.5±

For your review, we are enclosing:

- (1) Summary
- (2) Four Resolutions

We have presented all available information pertaining to this donation request to the Chairman, Land Committee, and to the member of the Board within whose district this project is located.

Discussion and Conclusion

Since 2021, the Department has worked with DOT to acquire approximately 13,843.5 acres of property across eleven counties from the DOT for conservation and public recreation purposes. We have previously received approval from the Board to accept the donation of these properties but were not aware of the need to include reversion language at that time.

Recently DOT realized they need to include reversionary language be added to the deeds of the properties. Since DOT will be conveying these properties at less than fair market value to another public entity and federal funds were used to acquire, these properties will remain in public ownership under 23CFR710.409, therefore DOT is required to retain a reversionary interest. The addition of this language will ensure compliance with applicable federal requirements.

The Department recommends approval to add reversionary language and to seek authorization from the State Properties Commission.

B-1

**Recommendation**

We recommend adoption of the attached Resolution.

MW:bw

Enclosures (1)

**RESOLUTION**

RECOMMENDING APPROVAL TO ADD REVERSIONARY DEED LANGUAGE TO THE FOLLOWING NAMED PROPERTIES, MORE PARTICULARLY IDENTIFIED ON THE ATTACHED "EXHIBIT A", FOR CONSERVATION AND RELATED PURPOSES.

Properties To Add Reversionary Language:

<b><u>Project</u></b>	<b><u>Property Owner</u></b>
<b>Ocmulgee WMA</b>	<b>Georgia Department of Transportation</b>
<b>Neyami Savanna Natural Area</b>	<b>1,127+ acres, Bleckley County</b>
<b>Townsend WMA</b>	<b>142+ acres, Lee County</b>
<b>Bullard Creek</b>	<b>6,960+ acres, Long County</b>
<b>Watson Mill Bridge State Park</b>	<b>491+ acres, Jeff Davis County</b>
<b>Bullard Creek WMA</b>	<b>96+ acres, Madison County</b>
<b>Bullard Creek WMA</b>	<b>1,007+ acres, Montgomery County</b>
<b>Conasauga River WMA</b>	<b>2.5+ acres, Montgomery County</b>
<b>Cedar Creek WMA</b>	<b>98+ acres, Murray County</b>
<b>Dixon Bay WMA</b>	<b>1,538+ acres, Putnam County</b>
<b>Black Creek</b>	<b>333+ acres, Screven County</b>
<b>Big Lazer WMA</b>	<b>685+ acres, Taylor County</b>
	<b>1,364+ acres, Upson County</b>

WHEREAS, the Georgia Department of Natural Resources is responsible for the conservation and wise utilization of the State's natural resources; and

WHEREAS, the Georgia Department of Natural Resources' staff has studied the subject properties and found their conservation and related values are indeed of statewide significance and that the development and management of these properties would contribute greatly to meeting the conservation needs of Georgia's natural resources and thus recommends the continued conservation of the subject properties; and

WHEREAS, the subject properties were previously conveyed, or are scheduled to be conveyed to the Department by the Georgia Department of Transportation (DOT), and the DOT has requested that reversionary language be added to the deeds to comply with applicable federal grant requirements; and

NOW, THEREFORE, BE IT RESOLVED THAT the Georgia Board of Natural Resources concurs in the findings of the Georgia Department of Natural Resources staff and recommends that the Commissioner of the Georgia Department of Natural Resources seek the approval of the State Properties Commission to add reversionary language to the deeds for the properties acquired from the Georgia Department of Transportation and manage the subject property for conservation and/or related purposes generally in accordance with applicable laws, policies, and procedures.

Adopted this 28<sup>th</sup> day of April, 2026.

Respectfully submitted by:

---

Patrick Denney, Chairman  
Georgia Board of Natural Resources

ATTEST:

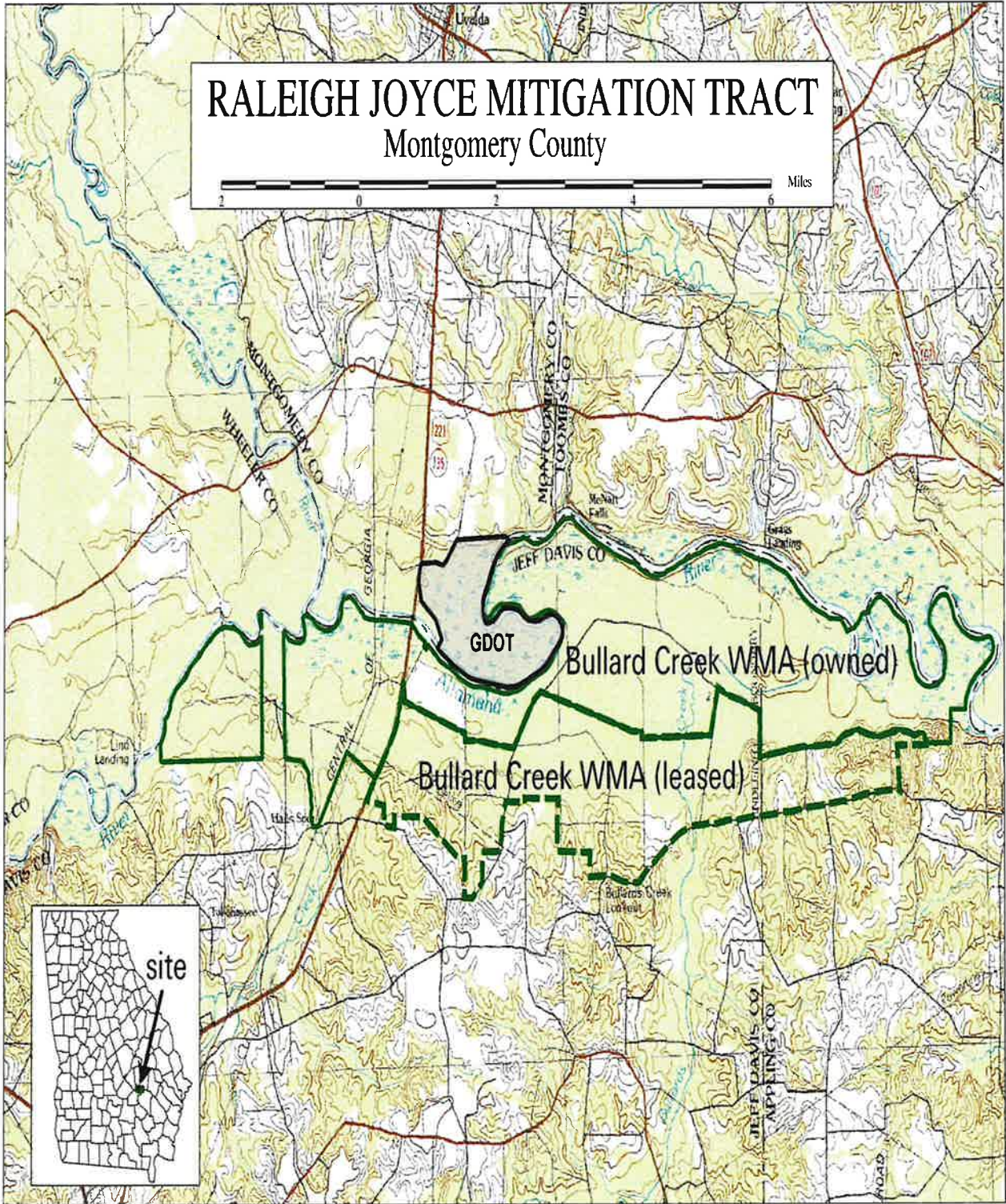
---

Dan Garcia, Secretary  
Georgia Board of Natural Resources



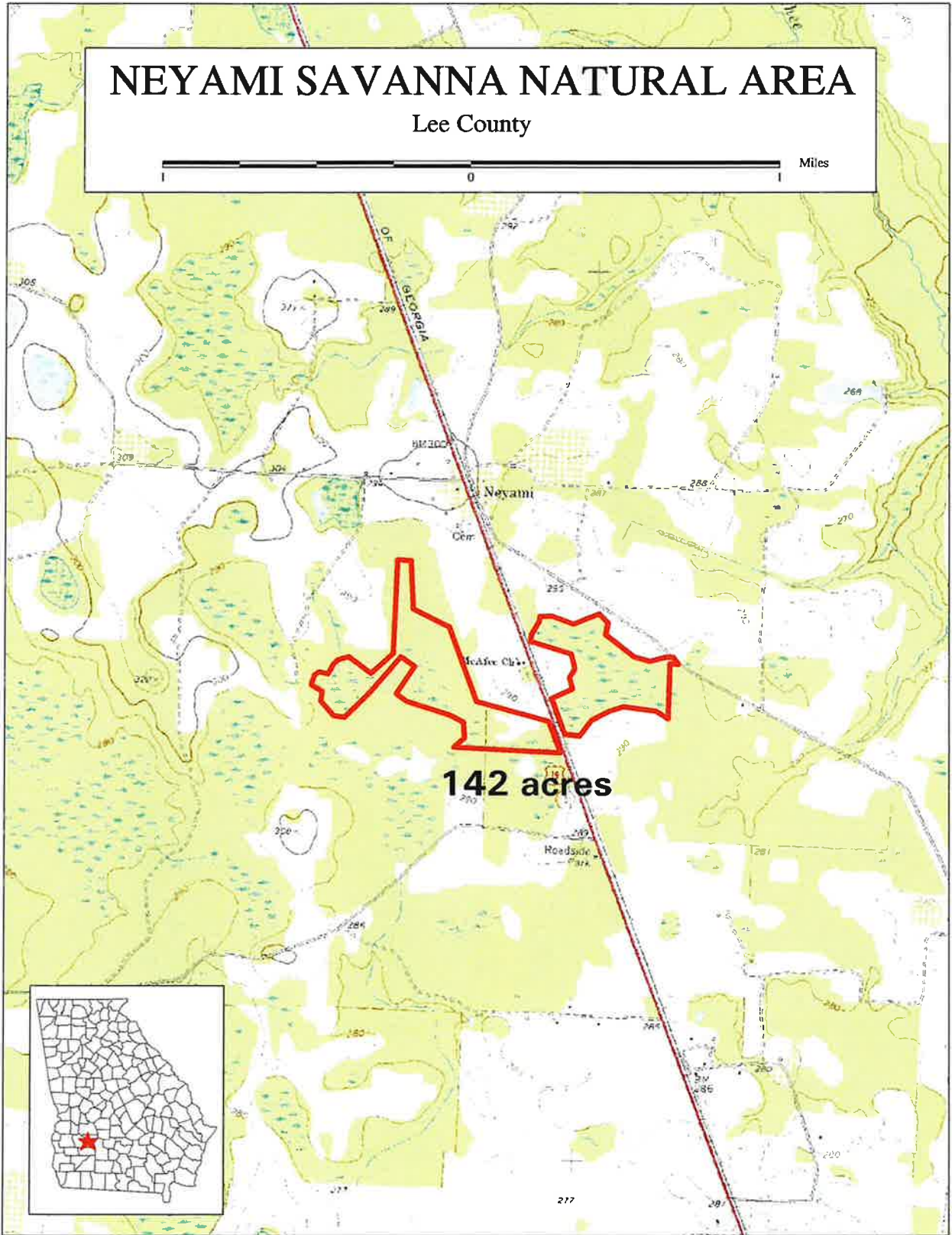
# RALEIGH JOYCE MITIGATION TRACT

## Montgomery County

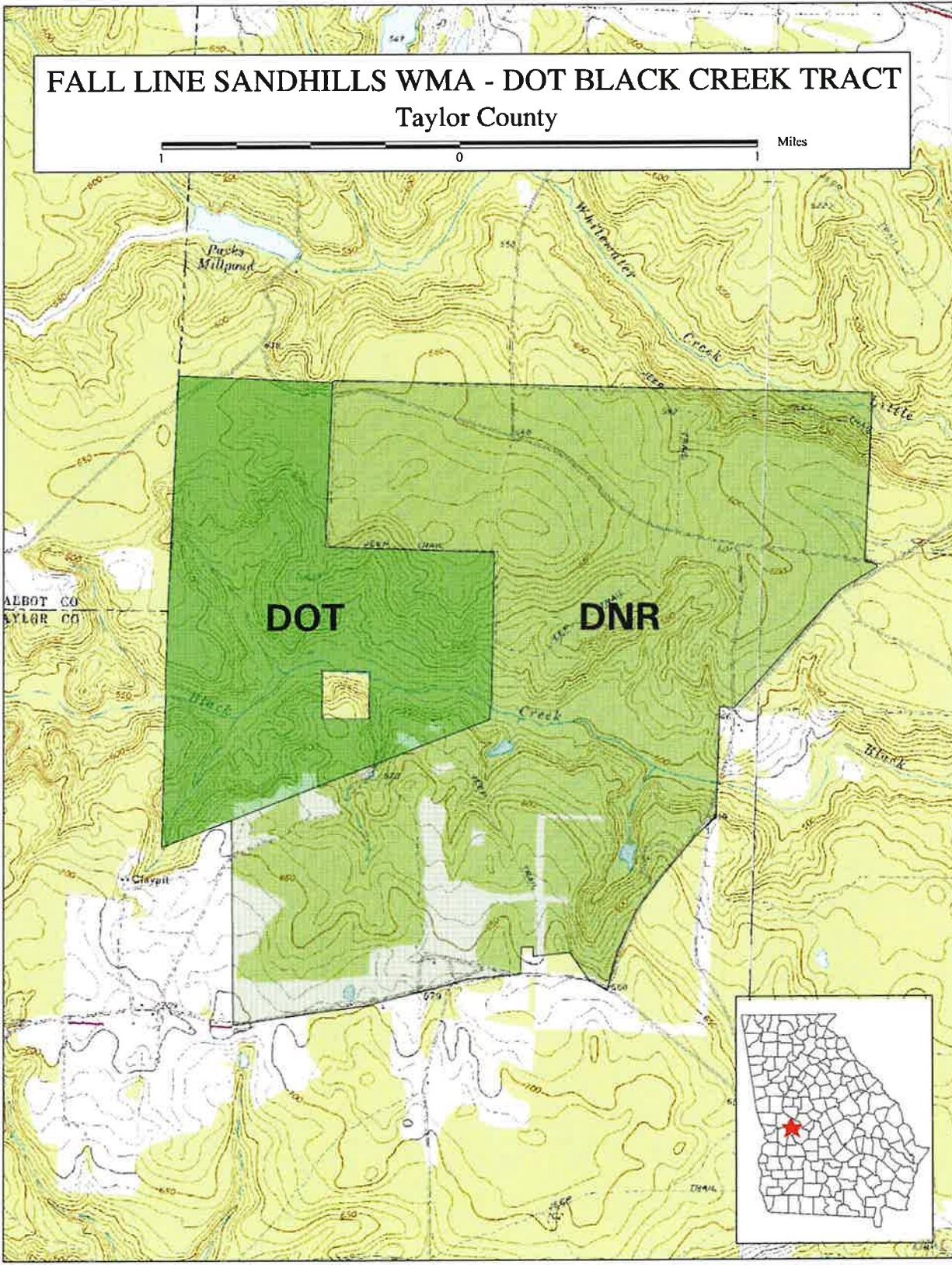


# NEYAMI SAVANNA NATURAL AREA

Lee County



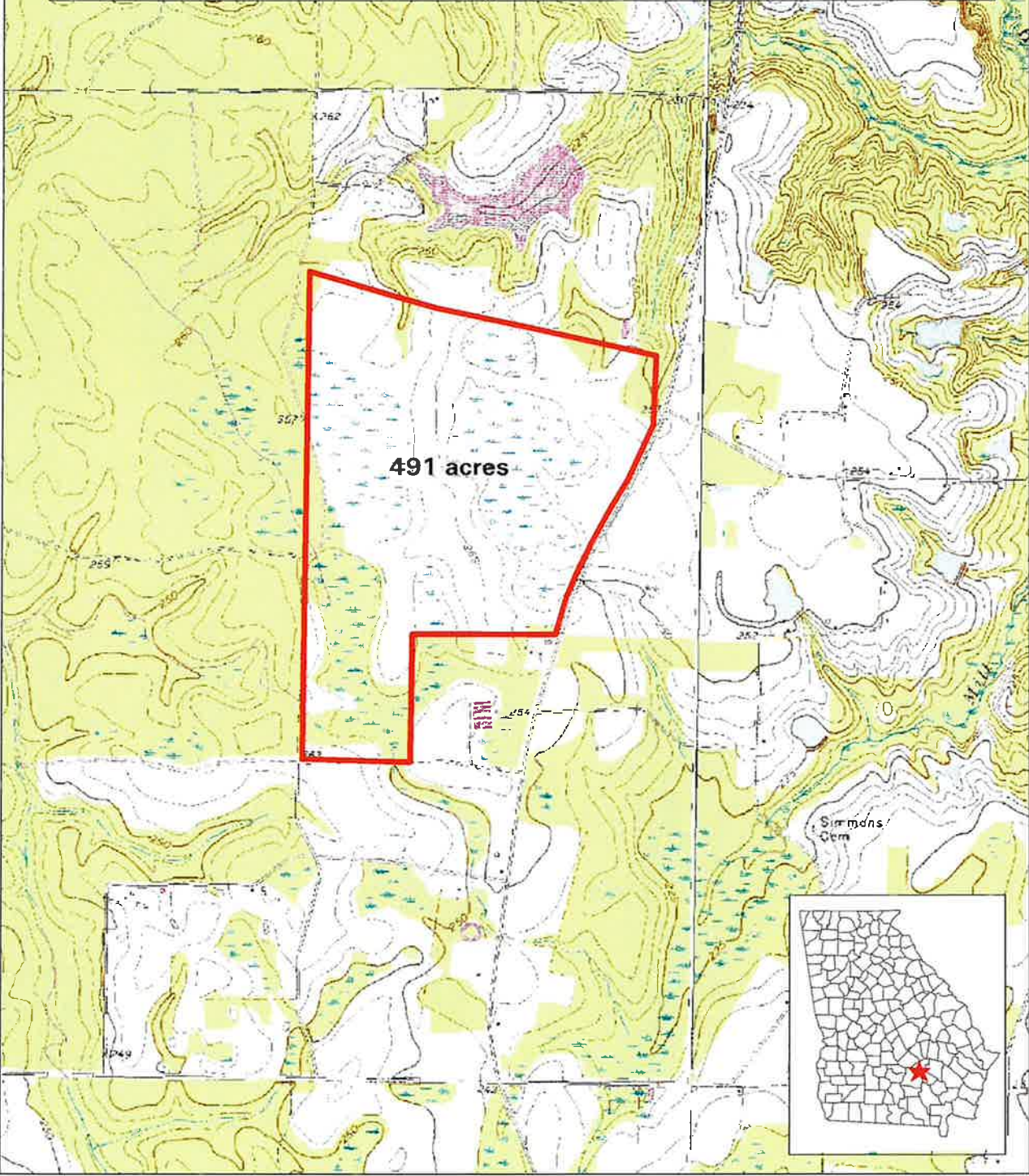
FALL LINE SANDHILLS WMA - DOT BLACK CREEK TRACT  
Taylor County

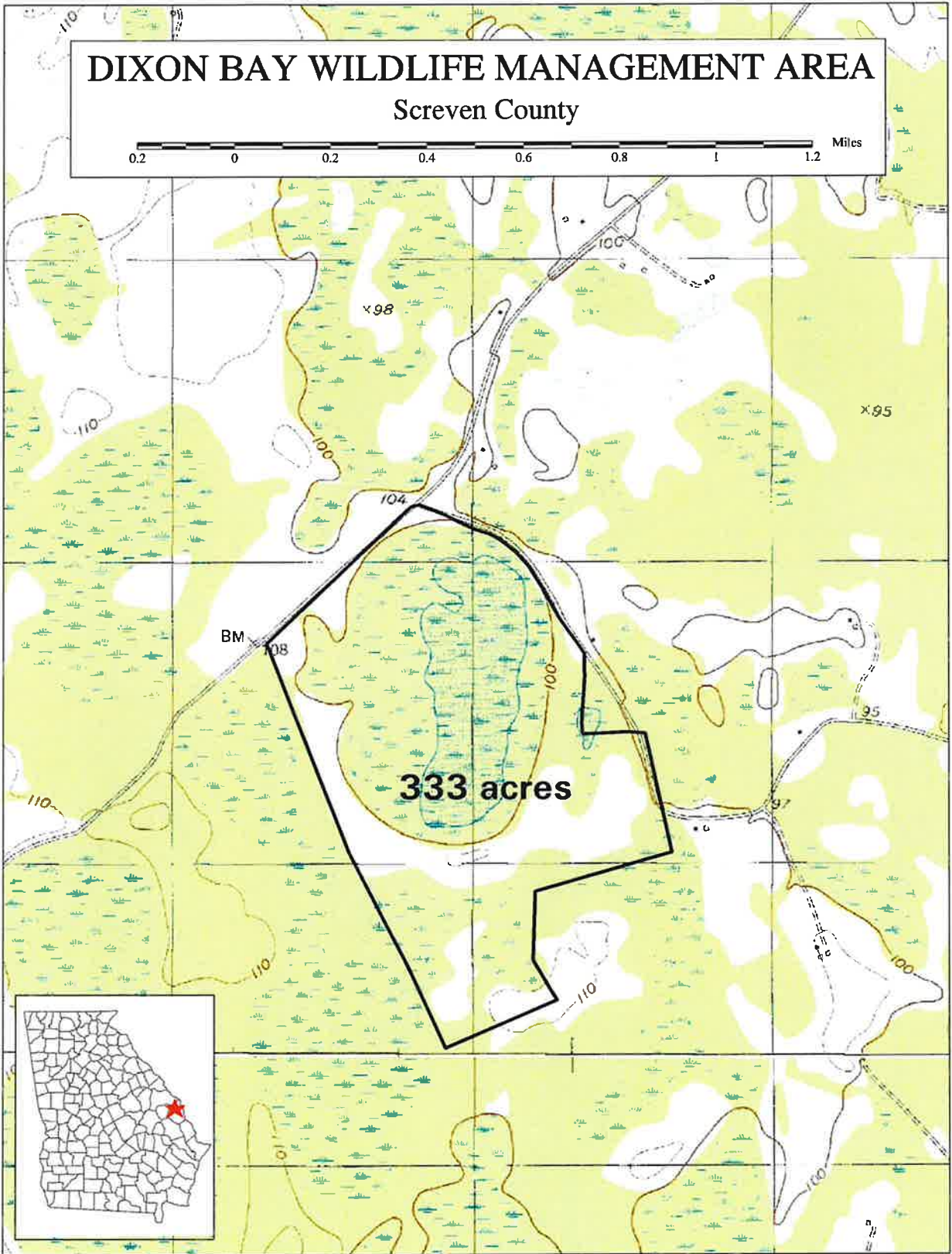




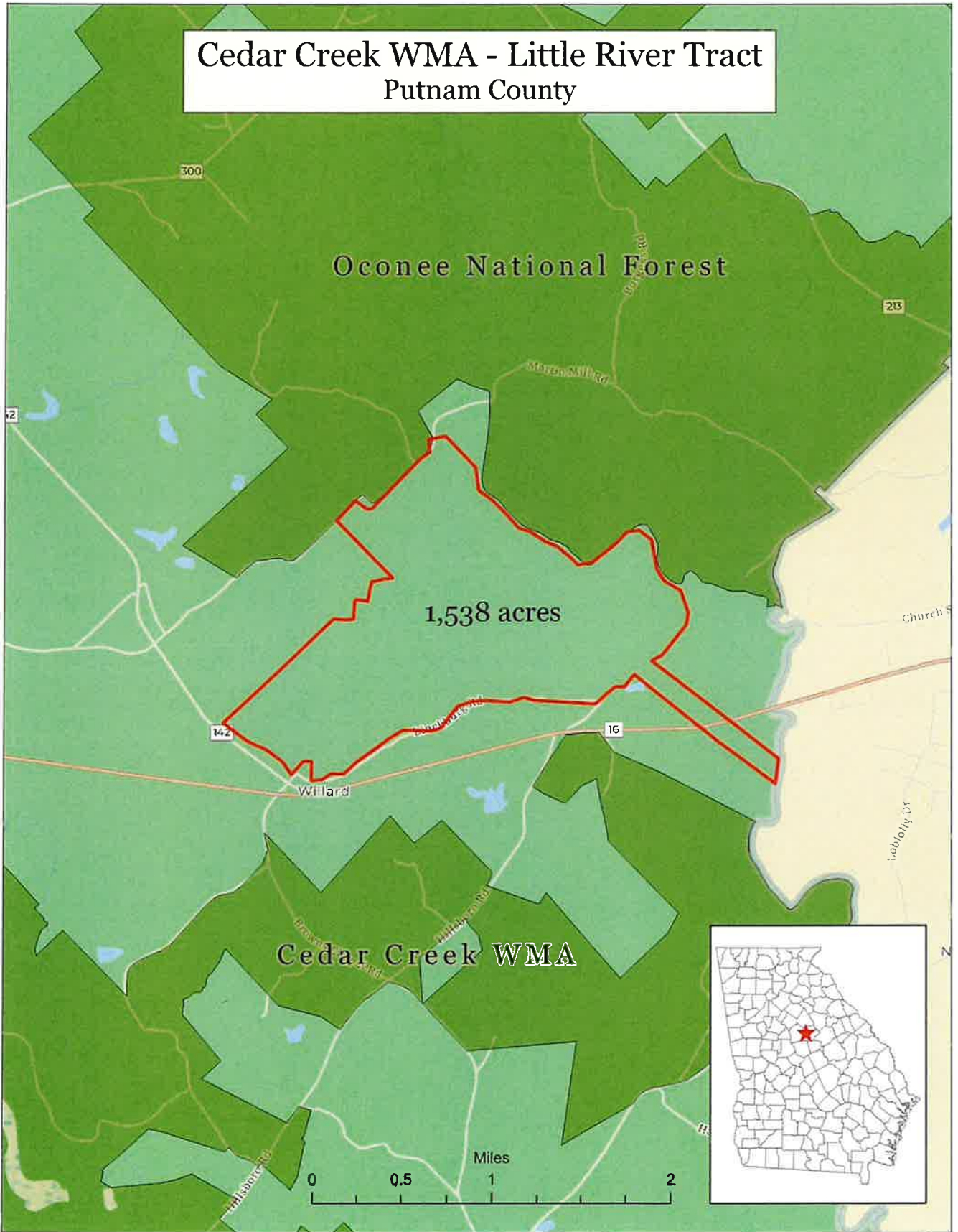
# BULLARD CREEK WMA BILL PRESTON TRACT

Jeff Davis County



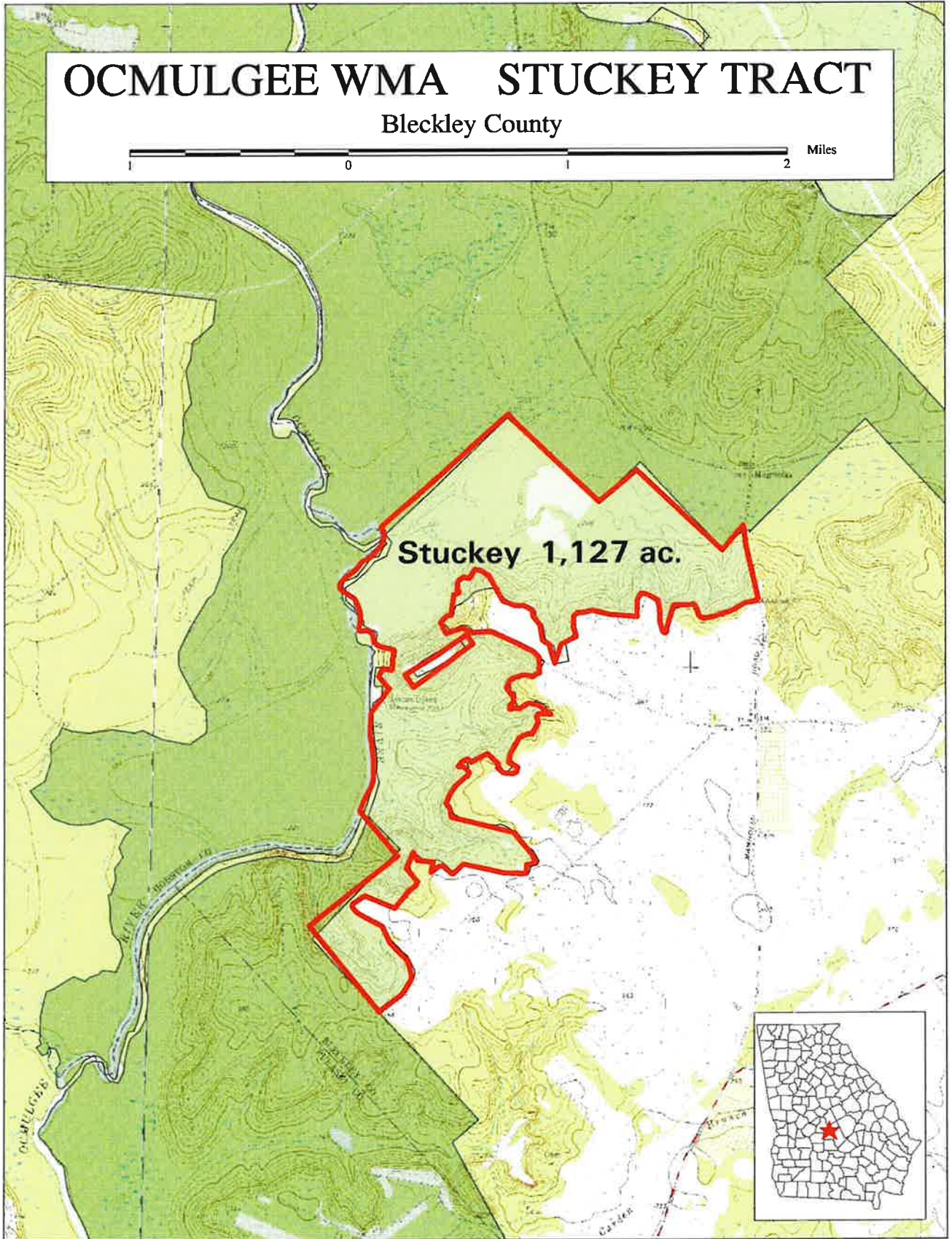


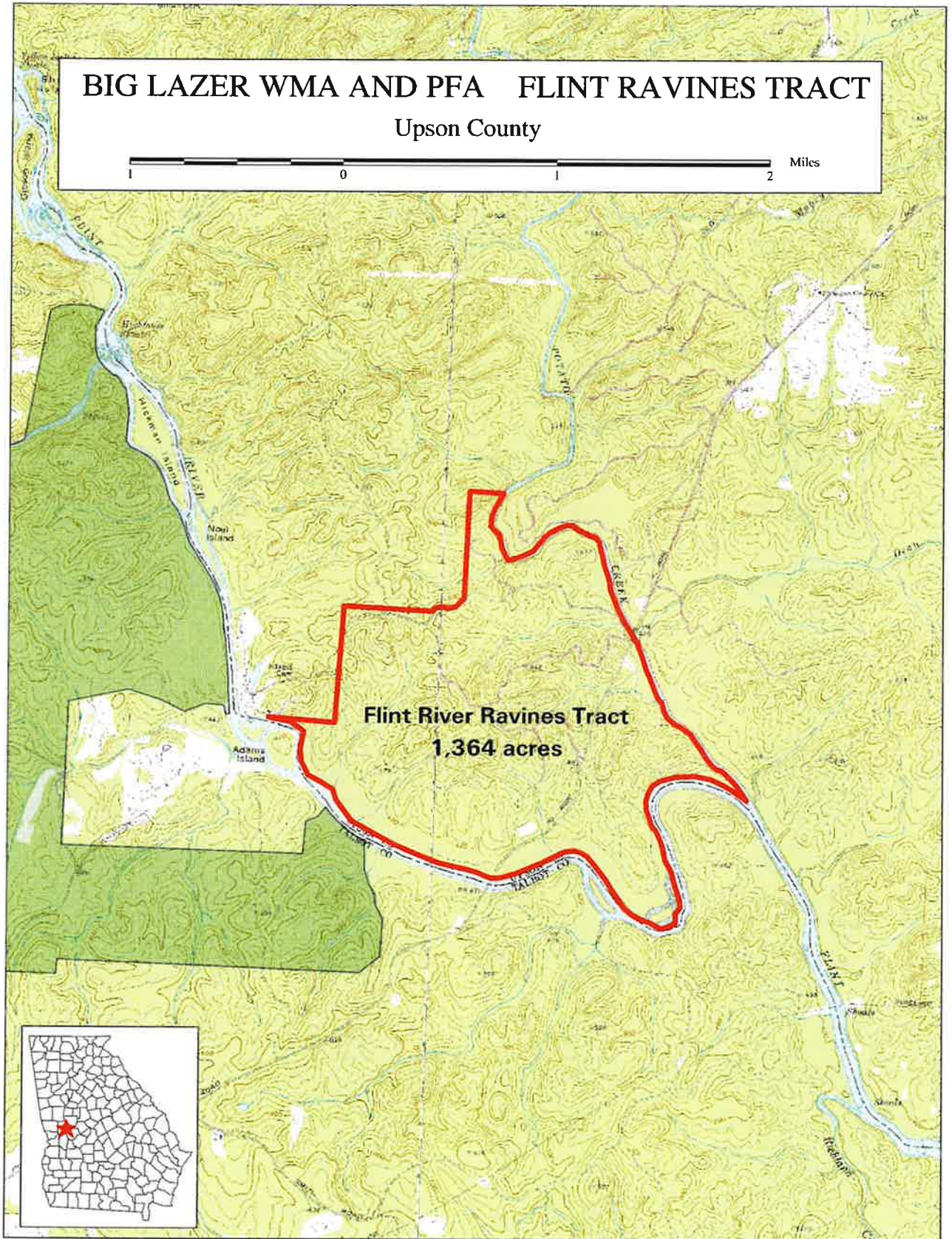
Cedar Creek WMA - Little River Tract  
Putnam County



# OCMULGEE WMA STUCKEY TRACT

Bleckley County





# WATSON MILL BRIDGE STATE PARK

Georgia Department of Transportation Tract - Madison County

