



COASTAL COMMITTEE MEETING

MAY 18, 2026 | ATLANTA, GA



SAFMC

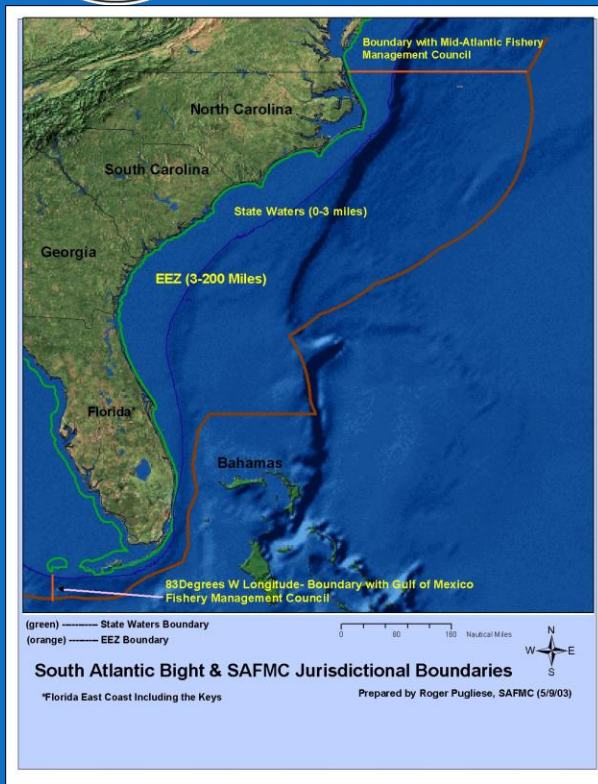


ASMFC



South Atlantic Fishery Management Council

SAFMC



- 1 of 8 regional Councils
- 1976 - Magnuson-Stevens Fishery Management Act
- Exclusive Economic Zone (EEZ)
 - 3 to 200 nautical miles
 - Federal Management
- South Atlantic Region – NC, SC, GA, and East Florida (to Florida Keys)
- “Conserve and Manage” through fishery management plans



Council Members



- Rec & com fishermen, state marine resources rep., NOAA Fisheries
- 13 voting members
 - One Vote Each
- Federal partners – U.S. Coast Guard, U.S. Fish & Wildlife Service, Atlantic States Marine Fisheries Commission



Fishery Management Plans

- Coastal Migratory Pelagics
 - King & Spanish Mackerels
- Coral & Live Bottom Habitat
- Dolphin Wahoo
- Golden Crab
- *Sargassum*
- Shrimp
- Snapper Grouper
 - 55 Species (including Red Snapper)
- Spiny Lobster
- Ecosystem





Plan Components

- Biological - data collection and stock assessments
- Policy mandates - NEPA, MMPA, Endangered Species Act, etc.
- Economic impacts
- Social impacts





APs / Tech / Public Input

- **Advisory Panels** - Rec, charter and com fishermen, environmental org., scientists, processors and others
- **Scientific & Statistical Committee** - Sets Catch Limits based on science as required by the MSA
- **Technical Assessment Panels** - Federal & State scientists
- **Public Comment** - Scoping Meetings, Public Hearings, Written Comments



Federal Fisheries Management

- Identification of management **issue**
- Public **Scoping** (when applicable)
- Public Hearing Document with options to be considered
- **Public Hearings** and written comment
- FMP or Amendment **approved by Council**
- FMP/Amendment **reviewed by NOAA Fisheries (NMFS)**
- Submitted to **Secretary of Commerce** – final approval
- **Regulations implemented** by NOAA Fisheries
 - Applies to the EEZ
 - Federal
- States create similar regulations to facilitate enforcement
 - Not under an obligation



Atlantic States Marine Fisheries Commission

ASMFC

- Formed in 1942 – Interstate Compact
 - O.C.G.A. 27-4-210 – 216 (1943)
- 15 states – ME – FL, including PA
- Coastal inland to 3 miles: state waters
- Primary objective – cooperative management of interstate fisheries
- Member states dedicated to the principle of working together to:
 - Maintain abundant stocks
 - Restore overfished stocks
 - Assess status of unknown stocks





One State – One Vote Principle

Georgia Representatives



Dir. Doug Haymans
Administrative Commissioner



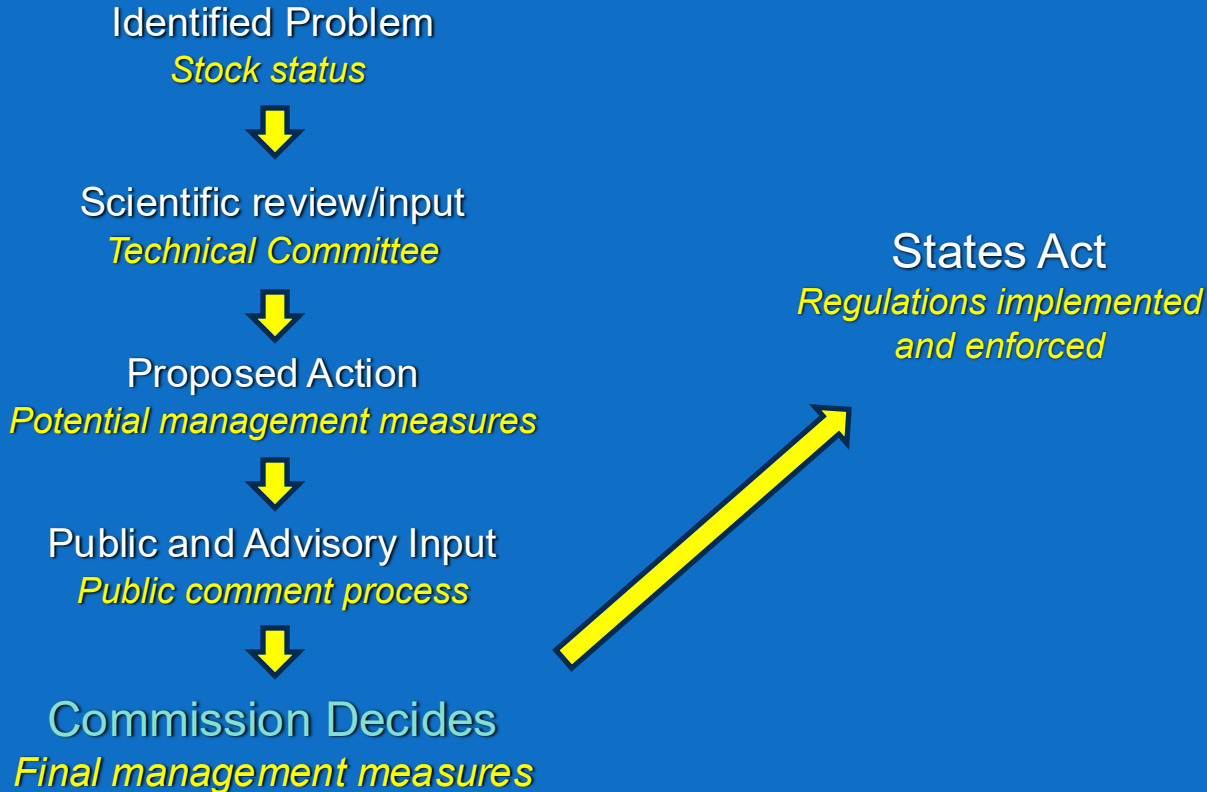
Rep. Trey Rhodes
Legislative Commissioner



Spud Woodward
Governor's Appointee



Decision-Making Process





Atlantic Coastal Fisheries Cooperative Management Act (ACFCMA)

- Cornerstone of the Commission's management program since 1994
- Establishes affirmative obligation to comply with FMP requirements
- Failure to comply may involve Secretarial moratorium on harvest in state waters



Management Plans

27 Species/Species Groups Under Management



American Eel



Atlantic Sturgeon



Cobia



Spanish Mackerel



American Shad



Black Drum



Horseshoe Crab



Spot



Atlantic Menhaden



Bluefish



Red Drum



Spotted Seatrout



Atlantic Croaker



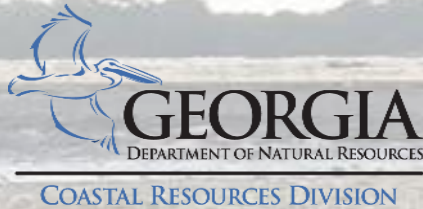
Coastal Sharks



River Herring



Weakfish



Briefing on Proposed Rule Change for 391-2-4-.04, Red Drum

Jared Flowers

May 18, 2026

Mission Statement:

To balance coastal development and protection of the coast's natural assets, socio-cultural heritage and recreational resources for the benefit of present and future generations.

Regional ASMFC Stock Assessment

ASMFC Red Drum Benchmark 2024 Stock Assessment:

- States from Florida to New Jersey participated in the assessment and contributed data
- Red Drum stock split into two segments:
 - **Northern Stock:** North Carolina and states north
 - **Southern Stock:** South Carolina, Georgia, and the east coast of Florida
- Conducted with best available data and methods
 - Data terminal year was 2022
- Used a different methodology than prior assessments
 - Described population numbers through a different process than previously

Stock Assessment Results

The stock assessment determined:

- **Southern Stock** is overfished and overfishing is occurring
 - Assessment passed peer review
 - Accepted by ASMFC Sciaenids Board for management
- **Overfishing:** fish harvested faster than they can reproduce
- **Overfished:** fish stock is depleted to a level where its ability to replenish itself has been compromised

Management Response

Red Drum are managed at certain levels of **Spawning Potential Ratio**

- **Spawning Potential Ratio (SPR):** reproductive capacity of a fish stock under fishing pressure compared to its unfished potential
- Overfished threshold of 30% SPR and a target of 40% SPR
 - Threshold: the SPR value under which a population is considered overfished
 - Target: the SPR value at which management goals are designed to achieve
- Existing Red Drum Fishery Management Plan (FMP) required states to manage at a target of 40% SPR
 - Amendment 2 enacted in 2002
 - Basis for current Georgia regulations

Management Response

- ASMFC Sciaenids Board revised Amendment 2 to the Red Drum FMP
 - Account for new assessment projections
 - Allow flexibility for regulation changes
 - Not unfairly punish states that have already taken management measures
 - Management at or above 30% SPR overfishing threshold
- As part of the Southern Stock, Georgia must make changes to reduce fishing levels

Management Response - Harvest Reduction

- Must reduce harvest, i.e. **fishing mortality (F)** to end overfishing and start population recovery to achieve SPR management goals
- Stock assessment projections determined reduction in **F** needed at various SPR levels
 - F30% is fishing mortality at 30% SPR → threshold
 - F40% is fishing mortality at 40% SPR → target
- CRD recommends management for F35% or higher:
 - More precautionary
 - Larger buffer for increasing fishing effort
 - Greater potential for regional population recovery

Management Target	Reduction in F Needed
F30%	-14.4%
F35%	-21.4%
F40%	-28.1%

Red Drum Management History

- **1980** – Red Drum management passes from NOAA to ASMFC
- **1984** – ASMFC develops first Fishery Management Plan
- **1986** – First Red Drum regulations in GA (14” min size, only 2 fish over 32”)
- **2002** – Year-round season; 14-23 inch slot; 5 fish daily creel and 5 fish possession limit
- **2013** – State Gamefish status established
- **2024** – ASMFC Benchmark Stock Assessment

- Coastwide stock assessments (**1989, 1991, 1992, 1995, 1999**) led to changes in state regulations (**1989, 1991, 1992, 1993, 2002**)

- Stock assessments in **2009** and **2017** did not require changes to management

Other Southern Stock State Regulations

South Carolina

- Managed statewide
- Current regulations
 - Slot Limit: 15-23” total length
 - Daily Bag Limit: 2 fish per person per day; 6 fish per vessel
- Changes proposed:
 - Slot Limit: 18-25” total length
 - Daily Bag Limit: 1 or 2 fish per day; 2 fish per vessel

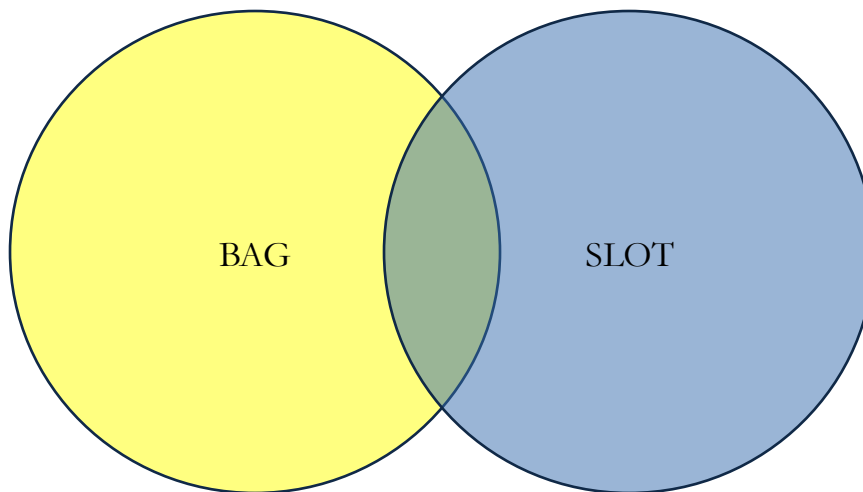
Florida

- Managed in different state regions
- Current regulations changed just prior to assessment
- NE FL
 - Slot Limit: 18 - 27” total length
 - Daily Bag Limit: 1 fish per person per day; 4 fish per vessel; no captain/crew bag
- Indian River Lagoon
 - Catch and Release only

Georgia Options

Potential Regulation Options

- Bag/Slot Combinations
 - Numerous options
 - Smaller changes to bag and slot limit than only changing either
 - Can tailor changes to better serve the interests of Georgia's Red Drum fishery



Proposed Georgia Options

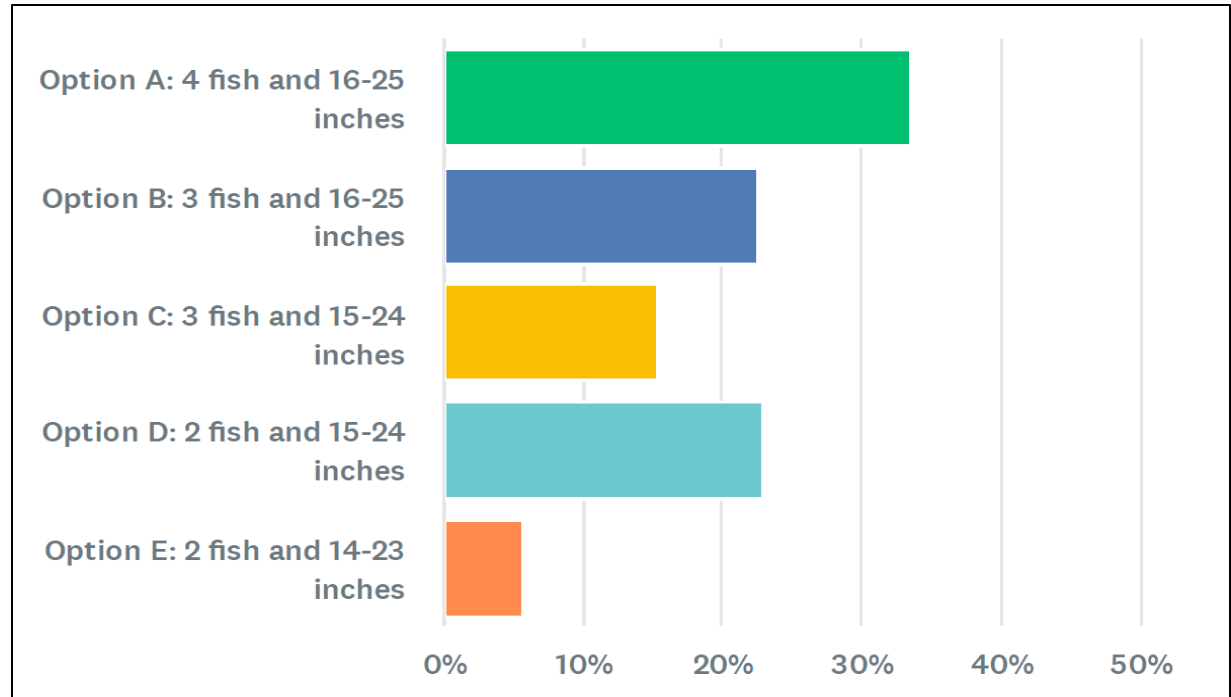
- Each of these options was approved by CRD's Finfish Advisory Panel and subsequently the ASMFC Red Drum TC at the April 2026 meeting
- September 1, 2026 is the ASMFC implementation date for new Georgia and South Carolina regulations

Bag	Slot	Reduction %
4	16" to 25" TL	Achieves F40%
3		Achieves F40%
3	15" to 24" TL	Achieves F35%
2		Achieves F40%
2	14" to 23" TL	Achieves F35%

Public Survey Results – Creel and Slot Limits

CRD public survey results concluded in early March 2026

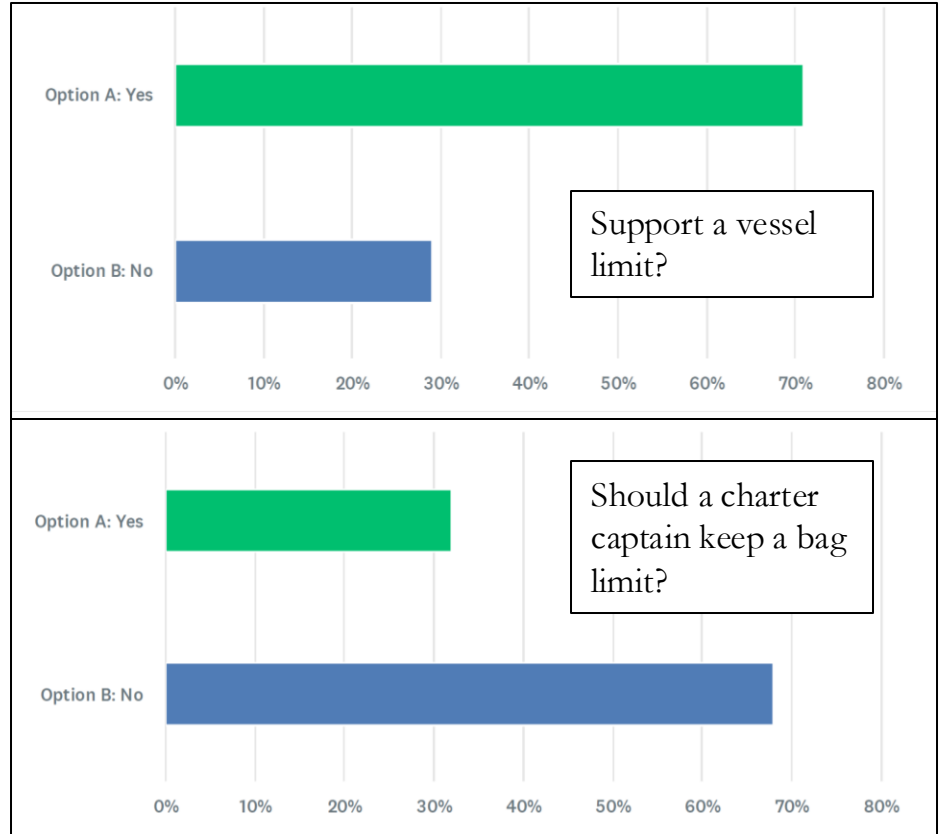
- 754 total respondents
 - 660 Recreational anglers
 - 66 Charter captain
 - 28 Other



Public Survey Results – Vessel & Crew Limits

Additional management options that can compliment bag and size changes

- **Vessel Limit** - Possession limit on total number of fish on an individual vessel in addition to individual angler bag limits
- **Charter Captain and Crew Limit** - A charter captain and crew may not retain a bag limit of fish on a charter trip



Proposed Amendments 391-2-4-.04

Saltwater Finfishing

(3) Seasons, Daily Creel and Possession Limits, Minimum and Maximum Size Limits - proposed to be amended such that . . .

(m) the daily creel and possession limit is changed to “**3** per person”, the minimum size (inches) to “**15**” TL”, and maximum size to “**24**” TL”

Public Participation Plan

September 24, 2025	ASMFC Georgia Public Hearing on Red Drum Draft Addendum II
October 30, 2025	ASMFC's Sciaenids Board approved Addendum II of the ASMFC Red Drum Fishery Management Plan Amendment 2
December 3, 2025	Finfish Advisory Panel presentation
February 6, 2026	Finfish Advisory Panel feedback received
February 25 & 26, 2026 and	Public Town Hall meetings conducted in Brunswick (included virtual option) Richmond Hill, respectively
May 18 & 19, 2026	CRD presents proposed amended Rule 391-2-4-.04 to the Board of Natural Resources, Coastal Committee
May 20, 2026	Public comment period
June 30, 2026	Public comment period closes
August 25, 2026	Consideration of public comment and final action on proposed amended rule.
January 1, 2027	Implementation/Effective date

Questions?



Regulations

- Bag only

Proposed Bag	Proposed Vessel	Percent Reduction
4	No Vessel	-6.2%
4	12	-6.2%
4	8	-7.1%
3	No Vessel	-12.5%
3	9	-12.5%
3	6	-14.3%
2	No Vessel	-21.7%
2	9	-21.7%
2	6	-21.7%
2	4	-23.9%

- Slot only

Slot Only	
15-23	-12.7%
15-24	-11.4%
15-25	-11.2%
15-26	-10.5%
15-27	-10.1%
16-23	-29.5%
16-24	-27.7%
16-25	-27.4%
16-26	-26.5%
16-27	-25.9%
18-27	-55.3%

*Cannot retain Red Drum >27" TL - ASMFC

- New reduction estimates not comparable to 2022 estimates

Regulations – 4 Fish Bag

Potential Options

- Slot and bag

- F30% = -14.4%
- F35% = -21.4%
- F40% = -28.1%

4 / No Vessel Lower

	14	15	16	17	18
Upper					
23	-10.7%	-18.1%	-33.9%	-49.2%	-62.7%
24	-8.8%	-16.9%	-32.2%	-47.1%	-60.4%
25	-8.5%	-16.7%	-31.9%	-46.7%	-59.9%
26	-7.6%	-16.1%	-31.1%	-45.8%	-58.8%
27	-6.9%	-15.7%	-30.5%	-45.1%	-58.1%

4 / 12 Vessel Lower

	14	15	16	17	18
Upper					
23	-10.8%	-18.2%	-33.9%	-49.2%	-62.7%
24	-8.9%	-16.9%	-32.2%	-47.1%	-60.4%
25	-8.5%	-16.7%	-31.9%	-46.8%	-60.0%
26	-7.6%	-16.1%	-31.1%	-45.8%	-58.8%
27	-7.0%	-15.7%	-30.6%	-45.1%	-58.1%

4 / 8 Vessel Lower

	14	15	16	17	18
Upper					
23	-11.4%	-18.7%	-34.4%	-49.6%	-63.0%
24	-9.5%	-17.5%	-32.7%	-47.5%	-60.7%
25	-9.2%	-17.3%	-32.4%	-47.1%	-60.2%
26	-8.3%	-16.7%	-31.6%	-46.2%	-59.1%

Regulations – 3 Fish Bag

Potential Options

- Slot and bag
 - F_{30%} = -14.4%
 - F_{35%} = -21.4%
 - F_{40%} = -28.1%

3/ No Vessel		Lower				
		14	15	16	17	18
Upper	23	-16.7%	-23.6%	-38.3%	-52.6%	-65.2%
	24	-14.9%	-22.5%	-36.7%	-50.6%	-63.0%
	25	-14.6%	-22.3%	-36.5%	-50.3%	-62.6%
	26	-13.8%	-21.7%	-35.7%	-49.4%	-61.6%
	27	-13.2%	-21.4%	-35.2%	-48.8%	-60.9%

3/9 Vessel		Lower				
		14	15	16	17	18
Upper	23	-16.7%	-23.6%	-38.3%	-52.6%	-65.2%
	24	-15.0%	-22.5%	-36.7%	-50.7%	-63.0%
	25	-14.6%	-22.3%	-36.5%	-50.3%	-62.6%
	26	-13.8%	-21.7%	-35.7%	-49.4%	-61.6%
	27	-13.2%	-21.4%	-35.2%	-48.8%	-60.9%

3/6 Vessel		Lower				
		14	15	16	17	18
Upper	23	-18.4%	-25.2%	-39.6%	-53.5%	-65.9%
	24	-16.7%	-24.0%	-38.0%	-51.6%	-63.8%
	25	-16.3%	-23.8%	-37.7%	-51.3%	-63.4%
	26	-15.5%	-23.3%	-37.0%	-50.4%	-62.4%
	27	-14.9%	-22.9%	-36.5%	-49.8%	-61.7%

Regulations – 2 Fish Bag

Potential Options

- Slot and bag
- F30% = -14.4%
- F35% = -21.4%
- F40% = -28.1%

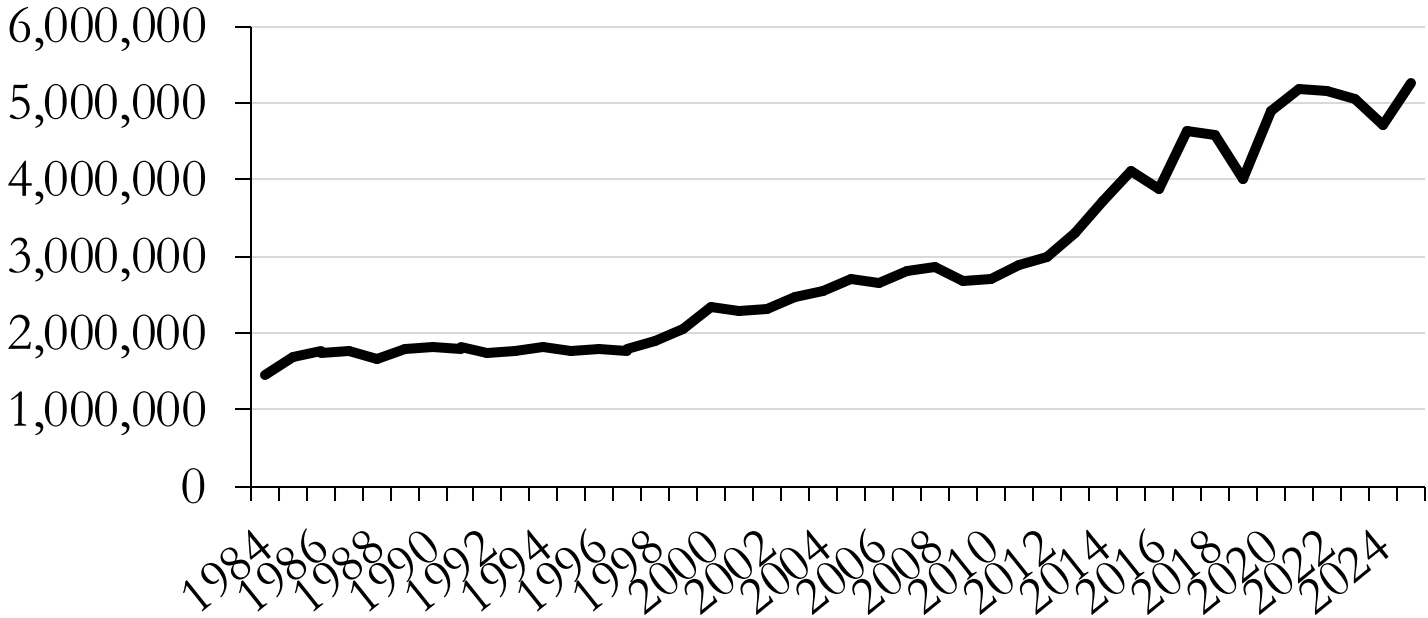
2/ No Vessel		Lower				
		14	15	16	17	18
Upper	23	-25.4%	-31.6%	-44.8%	-57.6%	-68.9%
	24	-23.9%	-30.6%	-43.4%	-55.8%	-66.9%
	25	-23.6%	-30.4%	-43.1%	-55.5%	-66.5%
	26	-22.8%	-29.9%	-42.4%	-54.7%	-65.6%
	27	-22.3%	-29.6%	-42.0%	-54.1%	-65.0%

2/ 6 Vessel		Lower				
		14	15	16	17	18
Upper	23	-25.5%	-31.6%	-44.8%	-57.6%	-68.9%
	24	-23.9%	-30.6%	-43.4%	-55.8%	-66.9%
	25	-23.6%	-30.4%	-43.1%	-55.5%	-66.6%
	26	-22.8%	-29.9%	-42.5%	-54.7%	-65.6%
	27	-22.3%	-29.6%	-42.0%	-54.2%	-65.0%

2/ 4 Vessel		Lower				
		14	15	16	17	18
Upper	23	-27.5%	-33.5%	-46.4%	-58.7%	-69.7%
	24	-26.0%	-32.5%	-45.0%	-57.1%	-67.8%
	25	-25.7%	-32.4%	-44.7%	-56.8%	-67.5%
	26	-25.0%	-31.9%	-44.1%	-56.0%	-66.6%
	27	-24.5%	-31.6%	-43.6%	-55.4%	-66.0%

MRIP Effort

Georgia Angler Trips 1984-2025







Update: Rules for Private Docks in Tidal Waters

Jill Andrews
Chief, Coastal Management Section
May 18, 2026





What are Private Docks?

Exempt from the Coastal Marshlands Protection Act: OCGA 12-5-295(7-7.1)

Single Family Dock:

- Private dock for noncommercial use by:
- Owner of a lot with detached single-family residence, or
- Owner of a lot with 50ft. marsh frontage upon which a single-family residence can be built.

Multi-Family Dock:

- Private dock for use by owners of up to four adjoining marsh front lots.
- Size to be determined by the department.
- Binding covenant to prohibit future single docks.



Regulation of Private Docks: Authorities

Protection of Tidewaters Act: O.C.G.A. 52-1-2

- State owner of beds of all tidewaters as successor to Crown of England and common law.
- State is trustee of the rights of people to use tidewaters.

Supervision of State Lands O.C.G.A 50-16-61

- Governor has general supervision over all state property.
- Power to make all necessary regulations.



Regulation of Private Docks: History

1984:

- Gov. Harris delegates authority over all state-owned tidal water bottoms to DNR; includes authority to grant Revocable Licenses (RL).
- DNR Real Estate office issued RL; separate county building and Army Corps permits.

1994:

- DNR delegates authority to CRD for granting, denying, modifying or revoking RL.



Revocable Licenses for Private Docks

- Issued by CRD to owners of the upland lot(s) from which the dock originates.
- Grants private use of state-owned tidal water bottoms that is not coupled with interest.
- Is valid for the specific size and location of a dock to be constructed.
- Is not transferrable but can be reissued to new property owners.
- Is revocable.





Regulation of Private Docks: History

1995 - 2022:

Programmatic General Permit:

- Army Corps of Engineers delegated their permit to CRD.
- Established criteria and standards.
- Re-evaluated every 5 years; agency review, public comment.



History of PGP0083

Date	Walkway	Fixed Dock (SqFt)	Float Dock (SqFt)	Channel Extension	Boat Hoist
RP's 1979 to 1996	Maximum 6' wide. No length or square foot restriction	576	288	25', or 15% channel width MLW to MLW, whichever is less	N/A
PGP 83 1996 to 2001	Maximum 6' wide. No length of square foot restriction	576	288	40', or 25% channel width MLW to MLW, whichever is less	12' x 25'
PGP 83 2001 to 2007	Maximum 6' wide. No length of square foot restriction	864	576	40', or 25% channel width MLW to MLW, whichever is less	16' x 30'
PGP 83 2007 to 2012	Maximum 6' wide. Maximum 3,000 square feet with wood decking. Greater than 3,000 square feet with grate decking or monorail.	400	576	40', or 25% channel width MLW to MLW, whichever is less	16' x 30'
PGP 83 2012 to 2016	Maximum 6' wide. Maximum 1,000' length. Maximum 3,000 square feet with wood decking. Greater than 3,000 square feet with grate decking or monorail.	300	576	40' or 25% channel width MLW to MLW, whichever is less	16' x 30'
PGP 83 2017 to 2022	Maximum 6' wide. Maximum 1,000' length. Maximum 3,000 square feet.	300	600	40' or 25% channel width MLW to MLW, whichever is less	16' x 30'



Regulation of Private Docks: History

2016 Rulemaking Attempt

- Based on current PGP at the time.
- Stalled due to significant public and legislative concern about requirements for marine contractors licensing.

2022 – Present:

- PGP expired August '22; Corps did not renew.
- CRD adopted a Standard Operating Procedure to continue PGP criteria and standards.
- CRD issues RLs for docks meeting SOP; Army Corps issues an individual permit.
- CRD initiated rulemaking to codify SOP, Jan '24.



Private Dock Rulemaking: Rationale

Private Dock Licenses Issued: 2015-2025

2015	2016	2017	2018	2019	2020	2021	2022	2023	2024	2025
90	188	153	153	198	157	266	211	148	144	152

Challenges:

Enforcement capacity

- Unlicensed construction.
- Improper construction.
- Upstream and downstream impacts on navigation or access by other property owners.

State vs. Federal standards

- Different state and federal standards.
- Homeowner confusion.
- Asynchronous timing of state and federal permits; exploitation.

Legal Challenges

- Defensibility of RL process
- Defensibility of a SOP.

Legal Challenges & Attorney General Opinions

Attorney General Opinion (1993)

- Straight-line extension of property boundary lines is acceptable method to allocate waterways; rigid adherence could cause inequitable results.

Dorroh v. McCarthy (Supreme Ct, 1995)

- Challenged DNRs allocation of waterways for private docks and validity of RL.
- Court held DNR exercised reasonable discretion in adopting a policy to apportion waterways.
- Revocable license declared valid.

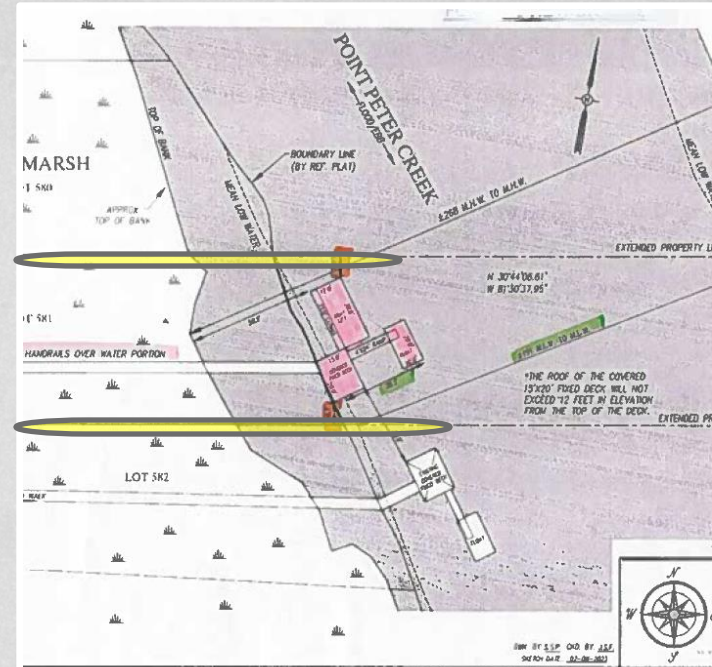


Image highlighting extended property lines (yellow)

Private Dock Rulemaking: Rationale

- **Started with SOP standards**
- **Consistency with CMPA Rules**
- **Compare with SE states**
- **Re-reviewed known research**
- **Public Input**
 - Proposed Rules to Board
 - Public Hearing input
 - Stakeholder Committee input
 - Town Hall Meeting input
 - Board of Natural Resources input





Private Dock Rulemaking: 2022 Standard Operating Procedure

- Siting criteria:
 - Within extended property lines or dock corridors;
 - stop at 1st creek 20ft or greater;
 - span creeks less than 20ft or limited to pierhead
- Size criteria for New Docks
 - Fixed Walkways
 - Fixed Deck
 - Hoists
 - Floating Docks (single & multi-family)
- Maintenance of Existing Docks
- Modifications of Serviceable Existing Docks

Date	Walkway	Fixed Dock (SqFt)	Float Dock (SqFt)	Channel Extension	Boat Hoist
PGP 83 2017 to 2022	Maximum 6' wide. Maximum 1,000' length. Maximum 3,000 square feet.	300	600	40' or 25% channel width MLW to MLW, whichever is less	16' x 30'



Private Dock Rulemaking:

Community & Commercial Docks, Marinas

Dock Type	Walkway Max Size	Walkway Max Length	Walkway Max Width	Fixed Deck Max Size
Tier 1 Community	-	500 ft.	4 ft.	180 sq.ft.
Tier 2 Community	3,000 sq.ft.	750 ft.	6 ft.	400 sq.ft.
Tier 3 Community & Commercial	3,000 sq.ft.	1,000 ft.	6 ft.	400 sq.ft.
Marinas	3,000 sq.ft.	1,000 ft.	6 ft.	-



State Comparisons of Private Dock Regulations

<i>State</i>	<i>Lot Size Min</i>	<i>Walkway Max</i>	<i>Fixed Deck Max</i>	<i>Floating Dock</i>	<i>Channelward Extension</i>	<i>Boat Hoist(s)</i>	<i>Total Area</i>
GA	50ft. riparian frontage	<u>length</u> : 1,000ft <u>width</u> : 6ft. <u>area</u> : 3,000 ft ²	300 ft ² may be partially 1/3 walled, covered.	600 ft ² . single 1,000sq.ft. multi-family jet docks don't count toward total under certain conditions	40' from mlw or 25% of waterway, whichever is less	yes: 1-16x30ft, 3x30 catwalk; 2 w/ proof of registration/bill of sale larger sizes considered upon proof of larger boat	total, including terminal end: 4,470 ft ² (includes 1 hoist & catwalk)
Other: roof 12ft high, w/eaves 18in. past edge of fixed deck. 10ft min off extended property lines							
SC	75ft. for single family; 50ft for shared dock	<u>length</u> : 1,000ft inc. all structures (deck & floating docks, etc.) <u>width</u> : 4ft max <u>area</u> : limited by total walkway length restriction	Yes, covered, no enclosed, no 2 nd story	Based on creek width: <u>>20ft</u> : no docks <u>20-50ft</u> : fixed decks and floats=120sq.ft. <u>51-150ft</u> = 160sq.ft <u>>150ft</u> = 600sq.ft. Jet docks count toward total allowable area		Yes; smallest hoist for purpose. 1 hoist per single family dock.	Total max area is limited to total dock walkway length restriction + creek size ft ² restrictions. Does not include hoist.

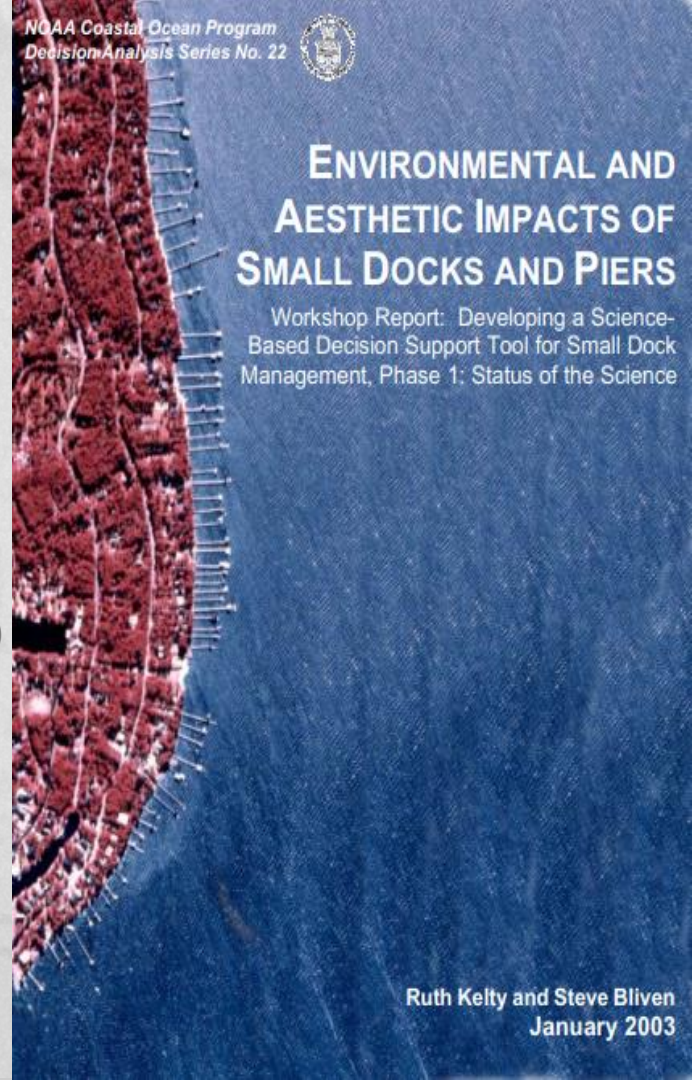


Private Dock Research



ENVIRONMENTAL AND AESTHETIC IMPACTS OF SMALL DOCKS AND PIERS

Workshop Report: Developing a Science-
Based Decision Support Tool for Small Dock
Management, Phase 1: Status of the Science



- Science & Management of Docks, multi-state scope (NOAA, 2004):
- **Analysis of dock impacts on saltmarsh (2004)**
- Cumulative impacts of dock shading in SC (2004)
- Visual impact assessment (2005)
- **Floating dock impacts on benthos (2006)**
- **Ecological significance of dock shading (2006)**
- **Accumulation of wrack by docks (2008)**
- **Effects of alternative materials on shading (2012)**
- Research on affects of dock structures on marsh-obligate bird species (various; Dr. Robert Cooper)



Private Dock Research

Research Findings of Significance:

Walkway Shading:

- Walkways shade saltmarsh vegetation.
- Stem density of saltmarsh plants is reduced by greater than 50%.
- Biomass and carbon loss is 21-37% under a walkway.
- Models show a quantifiable reduction in migrant nekton (juvenile penaeid shrimp and finfish).

Bird Habitat Fragmentation*:

- Docks >1,000ft length affects habitat usage by marsh obligate species, including state species of highest conservation concern.

*Reviewed upon stakeholder committee recommendation





Private Dock Stakeholder Committee

- Assembled July 2024 – January 2025.
- Committee members self-nominated to serve:
 - local government
 - contractors
 - engineers
 - dock builders
 - real estate specialists
 - environmental organizations
- Facilitated by UGA Carl Vinson Institute of Government.
- Supported by CRD staff, Army Corps, and scientists from the Skidaway Institute of Oceanography.



Private Dock Stakeholder Committee: Consensus

- Require licensed general contractor to build docks.*
- Require compliance with best practices for the protection of manatees and other protected species.
- Kayaks, paddleboards, canoes, and other similar non-motorized watercraft are not eligible for boat hoists.
- Recommend CRD create Dock Builders Certification Program.
- Include sample drawings in application packet.
- Develop a transfer of revocable license on sale of property.

*Consensus later reversed



Private Dock Stakeholder Committee: Minority Report

- Following sunset, committee reconvened to reconsider consensus items and to develop a “Minority Report.”
- A minority report recorded discussions centered around size of various dock components for which there was no consensus or majority vote:
 - Maximum walkway length and width – how long is too long and how wide is too wide
 - fixed deck size
 - gangway size
 - floating dock size.



Summary of Public Comments

2024 Public Comment Period

1 public hearing; 7 written comments total, generally supportive.

Recommendations included:

- Change (enlarge) some of the size standards
- Create variances for unique circumstances
- Require additional professional surveys
- Add conditions for species and special resource protection

Private Dock Town Hall (August 2025)

- Require electrical permits for docks for safety
- General contractors requirements overburdensome and unnecessary
- Put in protections for marine species, cultural resources
- Allow longer, bigger fixed walkways, length and width
- Do not increase walkway length - will result in bird habitat fragmentation
- Address construction methods, storm resilience, marine debris



Recommendations

Recommends based on 2024 Proposal:

- Add definitions
- Additional protected species conditions
- No requirements for general contractors' licenses
- Require proof of electrical permits
- Clarify dock lighting standards

Changes to size standards

- Variances for flexibility
- Fixed Deck: 300→400 ft²
- Fixed Walkway under consideration





Recommendations

Variations:

- Additional or larger boat hoists with associated catwalk; kayaks, canoes, paddleboards not eligible.
- Further extension of a dock into the waterway, not to exceed 1/3 of the waterway width.





Next Steps

Walkways to provide access from the upland to the waterway.

Current standard

- up to 1,000 ft long; 6ft. wide max. and 3,000 ft² max total area.
- Mirrors CMPA rules for community docks/marinas.

Variations under consideration:

- Length extension (less than 10%) to reach 1st waterway
- Total area or max width for longer docks
- If changed, what criteria or conditions apply?





Private Dock Rules: Tentative Timeline

Now – June 2026:

- Present Stakeholder Committee reports, public meeting and Town Hall comments and recommendations to Board.
- Request feedback on size criteria and possible variances from the Board.
- Consider all input and finalize draft rules.

Summer 2026:

- Brief DNR Board on Proposed Rules.
- Public comment period.

Summer/Fall 2026:

- Request DNR Board's adoption of Rules.



Thank you

