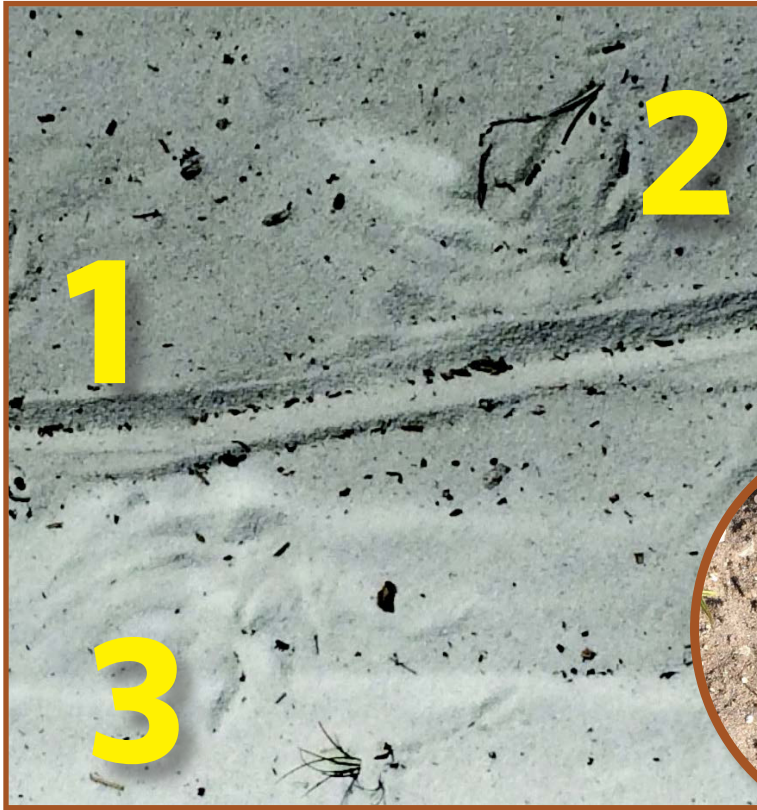


Tegu Track

ID Guide



Key Features

1. Long, continuous tail drag
2. Feet alternate
3. Toes may drag
4. Scale imprints may be left behind from the arm (4a) or tail (4b)



Track Profile

A long, straight tail drag with or without footprints. In dry sand, tail drag creates a deep channel. Easily confused with armadillo tracks. Armadillo tail drags meander, may not be continuous and often have footprints crossing on top of the track.

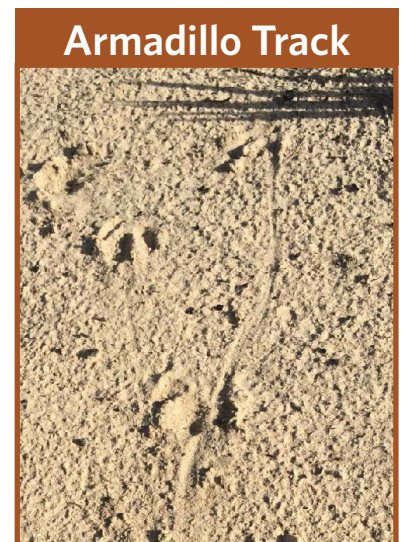
What Can You Do?

Report tegus in the wild! Note the location, take a photo and report the sighting online at www.gainvasives.org/tegu, (478) 994-1438 or gainvasives@dnr.ga.gov. Note: Tegus in the wild are *not* protected by Georgia wildlife laws or regulations (although local ordinances and animal cruelty laws apply). Tegus can be legally trapped or killed.

Learn more at <https://georgiawildlife.com/tegu>.



Tegu Track



Armadillo Track

Track Lookalikes

Tegu

A long, usually continuous tail drag. Tail creates a deep V-shape groove in soft soils. Footprints may not be visible.



Scale imprints may be visible on tail drag, footpad and where the legs touch the ground when the animal is at rest (see arrows).

Similar Tracks

Alligator

Swish marks flank central tail drag; wide set of feet.



Snake

S-shaped alternating deep and shallow ridges along margins.

Armadillo

Curving, not always continuous; scales may be visible on footpads.



Rodent

Small, meandering tail drag; alternating footprints very close together.